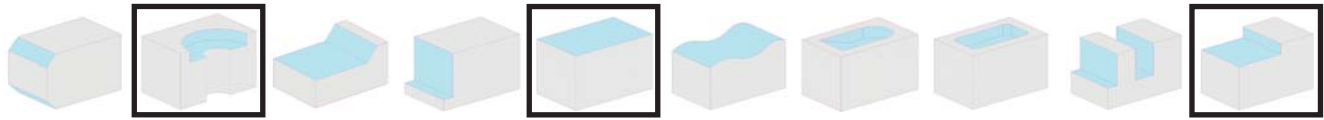
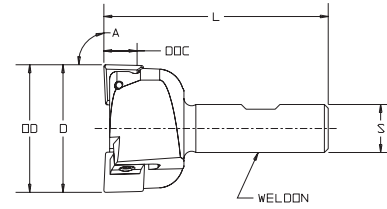
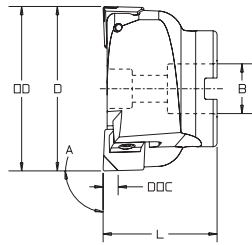


233 Series



Face Mills and End Mills



10° Pos Axial
Pos Radial
90° Shoulder

• Dynamically balanced for 3,000 sfpm

* Note: When using Diamond Inserts DOC can not exceed 2/3 of the Diamond

233 Series - Dimensional Specifications








Face Mills

Product Number	D	OD	B	H	A	DOC *	Insert	Teeth	Max. Recommended RPM	Weight
233F0250AME5-075R	2.50	2.50	0.75	1.75	90°	0.50	WMECA-53_R WMECA-53_RJ / MECA-53_J	2	4500	2.25
233F0300AME5-100R	3.00	3.00	1.00	1.75	90°	0.50	WMECA-53_R WMECA-53_RJ / MECA-53_J	3	4000	3.00
233F0400AME5-100R	4.00	4.00	1.00	1.75	90°	0.50	WMECA-53_R WMECA-53_RJ / MECA-53_J	3	3500	6.00
233F0400AME5-150R	4.00	4.00	1.50	1.75	90°	0.50	WMECA-53_R WMECA-53_RJ / MECA-53_J	3	3000	5.25

End Mills

Product Number	D	OD	S	L	A	DOC *	Insert	Teeth	Max. Recommended RPM	Weight
233E0200AME5-W075R	2.00	2.00	0.75	3.50	90°	0.50	WMECA-53_R WMECA-53_RJ / MECA-53_J	2	5000	1.50

LEFT HAND cutters also available

Insert I.C. x Thickness							
.625 x .188	Insert Pg. 37 MECA-53_J	Insert Pg. 48 WMECA-53_RJ	Insert Pg. 59 WMECA-53_R	Insert Lock 1570PF-2	Lock Screw 1495	Spring Pin 3502-2322-0002	Lock Screw Wrench 1557-PT10
.625 x .188	"J" Polish	"J" Polish	Style "A/B" PCD			.125 x .250	

Note: See insert page for "A / B" DOC & page 23

Machining Parameters

Material	SFPM	FPT	Primary	Secondary
Aluminum and Aluminum Alloy	1000 & Up	.005-.020	WMECA-53_RJ GR LTC-21	MECA-53_J GR LTC-21
Aluminum and Aluminum Alloy	1000 & Up	.005-.012	WMECA-53_RJ LTC-130	N/A

- Dynamically balanced for 3,000 sfpm for high velocity milling of aluminum
- Security *Safe-Plus™* locking system ensures operator safety during extreme applications
- Coarse pitch design accommodates heavy feed rates with excellent chip evacuation
- "J" polished MECA type inserts create smooth clean cutting action on all soft materials
- Combination NAS-986 (not shown) / Weldon shank can be utilized in most machine tool types



Index

Specials

Inserts

General

Cavity Mold

Gray Iron

PCD / CBN

Slotters

Technical Data

Holders