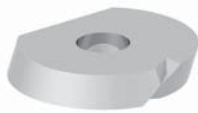
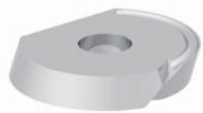


# Inserts

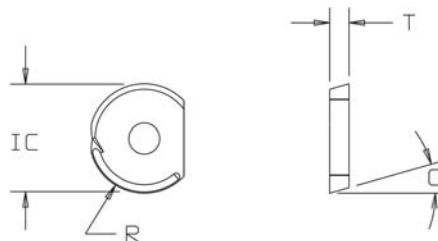
# Conventional

## BCEG Type

## BCEA Type



for "557" Series

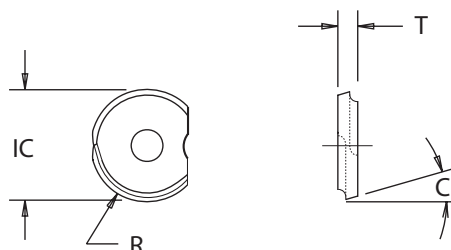


Insert Dimensional & Grade Specifications

Insert Number	IC	T	R	C	Non-Ferrous		Ferrous	
					586XRm	LTC-10	606jRm	LTC-14
BCEG-2.51	0.312	0.078	0.156	7°	●●●●		●	
BCEA-31.5	0.375	0.098	0.187	7°	●●●●		●	
BCEG-31.5	0.375	0.098	0.187	7°	●●●●		●	
BCEA-41.5	0.500	0.098	0.250	7°	●●●●		●	
BCEG-41.5	0.500	0.098	0.250	7°	●●●●		●	
BCEA-52	0.625	0.118	0.312	7°	●●●●		●	
BCEG-52	0.625	0.118	0.312	7°	●●●●		●	
BCEA-62	0.750	0.118	0.375	7°	●●●●		●	
BCEG-62	0.750	0.118	0.375	7°	●●●●		●	
BCEA-82.5	1.000	0.157	0.500	7°	●●●●		●	
BCEG-82.5	1.000	0.157	0.500	7°	●●●●		●	
BCEA-103	1.250	0.197	0.625	7°	●●●●		●	
BCEG-103	1.250	0.197	0.625	7°	●●●●		●	

## BCCG Type - MicroFinisher

for "557" Series



\* MicroFinisher Insert

\* Used in 557 Series for finish cuts only from .005 to .035 depths

BCCG Microfinisher Insert Dimensional and Grade Specifications

Insert Number	IC	T	R	C	Finish Grades - Ferrous & Non-Ferrous
					900XRm
BCCG-2.51.3-8G	0.312	0.078	0.156	7°	●
BCCG-31.5-8G	0.375	0.098	0.187	7°	●
BCCG-41.5-8G	0.500	0.098	0.250	7°	●
BCCG-52-8G	0.625	0.118	0.312	7°	●
BCCG-62-8G	0.750	0.118	0.375	7°	●
BCCG-82.5-8G	1.000	0.157	0.500	7°	●
BCCG-103-8G	1.250	0.197	0.625	7°	●

● All Materials

● Cast Iron

● Hardened Materials

● Steel

● Aluminum / Non-Ferrous

● Stainless Steel

● Heat Resistant Super Alloys



Index

Specials

Inserts

General

Cavity Mold

Gray Iron

PCD / CBN

Slotters

Technical Data

Holders