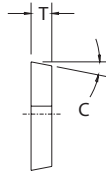
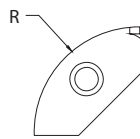


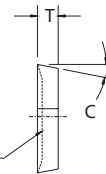
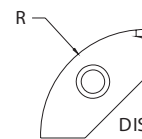
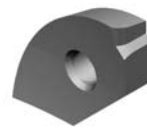
# Inserts

# Conventional

## CZPEB Type



## CZPEH Type



for "539" Series cutters

Insert Dimensional & Grade Specifications										
Insert Number	R	T	C	Geometry	Coated Grades			Uncoated Grades		
					586XRm	606jRm	LT-50	LTC-14	LTC-10	LTC-21
CZPEB-2.52A-100R	0.492	0.125	11°	Flat	●●●●			●	●●●	
CZPEB-3.53A-125R	0.618	0.188	11°	Flat	●●●●	●		●	●●●	
CZPEB-43A-150R	0.745	0.188	11°	Flat	●●●●			●	●●●	
CZPEB-53A-200R	0.996	0.188	11°	Flat	●●●●	●		●	●●●	
CZPEH-2.52A-100R	0.492	0.125	11°	10° Dish	●●●●	●		●	●●●	
CZPEH-3.53A-125R	0.618	0.188	11°	10° Dish	●●●●	●		●	●●●	
CZPEH-43A-150R	0.745	0.188	11°	10° Dish	●●●●	●		●	●●●	
CZPEH-53A-200R	0.996	0.188	11°	10° Dish	●●●●	●		●	●●●	

Index

Specials

Inserts

General

Cavity Mold

Gray Iron

PCD / CBN

Slotters

Technical Data

HOLDERS

- All Materials
- Cast Iron
- Hardened Materials
- Steel
- Aluminum / Non-Ferrous
- Stainless Steel
- Heat Resistant Super Alloys

