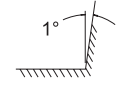
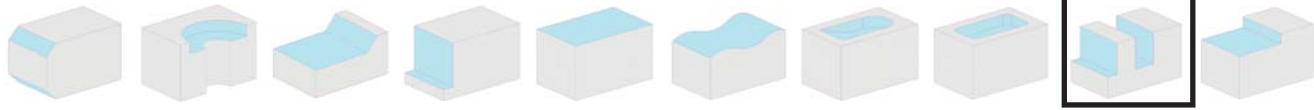
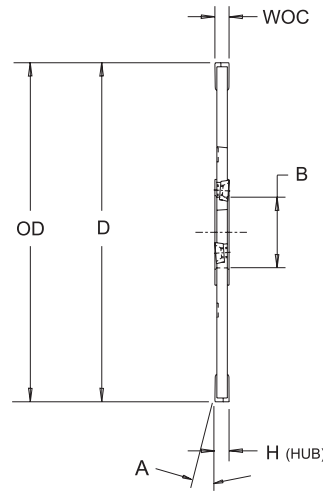


EXSP Series



Slotting Cutter

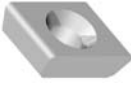




8° Pos Axial
Pos Radial
0°30' Dish

- Engineered for narrow slotting applications

EXSP Series - Dimensional Specifications

Product Number	D	OD	B	H	A	WOC	Insert	Teeth	Weight
4.0EXSP25-5H	4.00	4.00	1.25	.250	0°30'	.250	DPCB-32.145-1L/R	10	0.50
5.0EXSP25-6H	5.00	5.00	1.50	.250	0°30'	.250	DPCB-32.145-1L/R	12	1.00
6.0EXSP25-6H	6.00	6.00	1.50	.250	0°30'	.250	DPCB-32.145-1L/R	14	2.00
8.0EXSP25-8H	8.00	8.00	2.00	.250	0°30'	.250	DPCB-32.145-1L/R	18	3.50
4.0EXSP31-5H	4.00	4.00	1.25	.312	0°30'	.312	DPCB-323-2L/R	10	0.75
5.0EXSP31-6H	5.00	5.00	1.50	.312	0°30'	.312	DPCB-323-2L/R	12	1.50
6.0EXSP31-6H	6.00	6.00	1.50	.312	0°30'	.312	DPCB-323-2L/R	14	2.50
8.0EXSP31-8H	8.00	8.00	2.00	.312	0°30'	.312	DPCB-323-2L/R	18	3.75

Insert I.C. x Thickness	 Insert Pg. 34	 Torx® Screw	 Insert Screw Wrench
.375 x .500 x .145	DPCB-32.145-1L	3605-0001-0006	1557-TX10
.375 x .500 x .145	DPCB-32.145-1R	3605-0001-0006	1557-TX10
.375 x .500 x .188	DPCB-323-2L	3605-0001-0019	1557-TX10
.375 x .500 x .188	DPCB-323-2R	3605-0001-0019	1557-TX10

Machining Parameters

Material	SFPM	FPT	Primary	Secondary
Medium Alloy Steel	300-700	.002-.010	DPCB-32.145-1R/L GR LT-40	DPCB-32.145-1R/L GR LTC-14
Tool Steel, P20	300-700	.002-.010	DPCB-32.145-1R/L GR LT-40	DPCB-32.145-1R/L GR LTC-14
Soft Alloy Steel	400-800	.002-.010	DPCB-32.145-1R/L GR LT-40	DPCB-32.145-1R/L GR LTC-14

- Free cutting positive geometry accommodates a variety of workpiece materials
- Tangentially mounted inserts supply strong cross section mass and facilitate narrow widths
- Balanced engineering provides excellent force and load management to offset deflection
- Simple lock screw and precision pocket ensure quick accurate indexes with little down time
- Narrow widths of EXSP accommodate sawing and parting applications



Index

Specials

Inserts

General

Cavity Mold

Gray Iron

PCD / CBN

Slotters

Technical Data

Holders