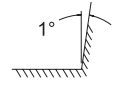
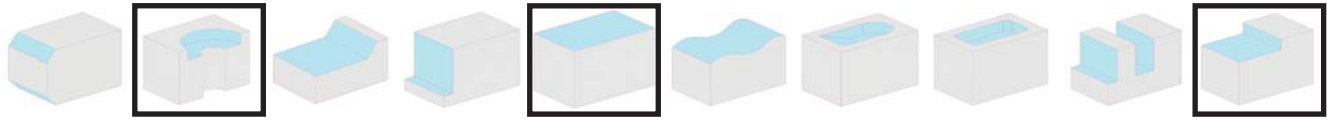
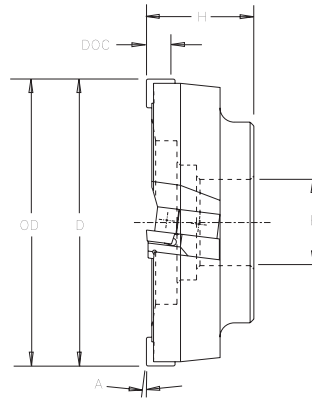
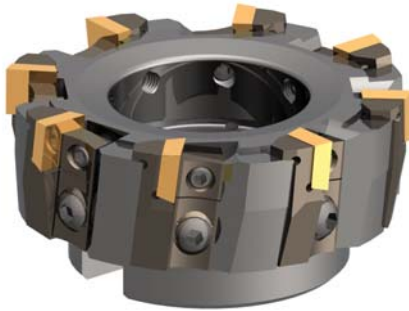


# GTA Series



## Face Mills

7° Pos Axial Pos Radial 1° Dish



### GTA Series - Dimensional Specifications

Product Number	D	OD	B	H	A	DOC	Insert	Teeth	Weight
3GTAR4-1	3.000	3.030	1.00	1.87	1°	.460	SPE-43__	6	2.00
4GTAR6-1	4.000	4.030	1.50	1.87	1°	.460	SPE-43__	8	3.50
5GTAR6-1	5.000	5.030	1.50	1.87	1°	.460	SPE-43__	10	6.00
6GTAR8-1	6.000	6.030	2.00	1.87	1°	.460	SPE-43__	12	8.50
7GTAR8-1	7.000	7.030	2.00	1.87	1°	.460	SPE-43__	14	11.50
8GTARU-1	8.000	8.030	2.50	2.25	1°	.460	SPE-43__	16	14.50

LEFT HAND cutters also available

Insert I.C. x Thickness									
	Insert Pg. 43	Anvil	Anvil	Adjusting Screw	Insert Lock	Lock Screw	Anvil Lock	Lock Screw	Lock Screw Wrench
.500 x .188	SPE-43__	1357R/L	1357RA/LA	1399	1570	1573	1571	10-32 x 1/2"	1557-PT8

### Machining Parameters

Material	SFPM	FPT	Primary	Secondary
Gray Iron, Class 30	200-500	.005-.012	SPE-432 GR 586XRm	SPE-432 GR LTC-21
Tool Steel, D2	250-350	.005-.012	SPE-432 GR 606jRm	SPE-432B GR LTC-14
Medium Alloy Steel	300-700	.005-.012	SPE-432B GR LT-50	SPE-432B GR M+
Tool Steel, P20	300-700	.005-.012	SPE-432B GR LT-50	SPE-432B GR LTC-14
Soft Alloy Steel	400-800	.005-.012	SPE-432 GR LT-40	SPE-432 GR LTC-14

- Free cutting positive geometry accommodates a variety of workpiece materials
- Precision hardware components ensure quick accurate insert indexing
- Hardened hardware components provide body protection for superior tool durability
- 1° dish angle generates a near square 90° utilizing the standard SPE-43 insert



Index

Specials

Inserts

General

Cavity Mold

Gray Iron

PCD / CBN

Slotters

Technical  
Data

Holders