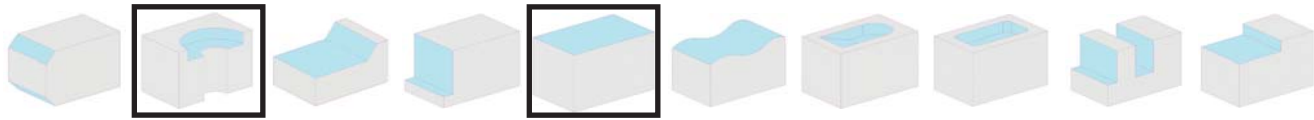
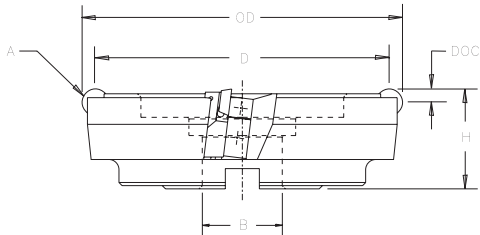


GTZ Series

Round 



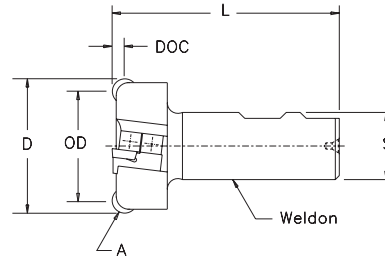
Face Mills



End Mills



7° Pos Axial
Pos Radial







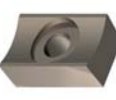



GTZ Series Face Mills - Dimensional Specifications

Product Number	D	OD	B	H	A	DOC	Insert	Teeth	Weight
3GTZR4	2.50	3.00	1.00	1.87	Radii	.250	RDE-43__	6	3.00
4GTZR6	3.50	4.00	1.50	1.87	Radii	.250	RDE-43__	8	4.00
5GTZR6	4.50	5.00	1.50	1.87	Radii	.250	RDE-43__	10	7.00
6GTZR8	5.50	6.00	2.00	1.87	Radii	.250	RDE-43__	12	8.50
7GTZR8	6.50	7.00	2.00	1.87	Radii	.250	RDE-43__	14	14.00
8GTZRU	7.50	8.00	2.50	1.94	Radii	.250	RDE-43__	16	18.00

GTZ Series End Mills - Dimensional Specifications

Product Number	D	OD	S	L	A	DOC	Insert	Teeth	Weight
20GTZRW4	1.50	2.00	1.00	4.00	Radii	.250	RDE-43__	3	1.50
25GTZRW5	2.00	2.50	1.25	4.00	Radii	.250	RDE-43__	4	2.50
30GTZRW5	2.50	3.00	1.25	4.00	Radii	.250	RDE-43__	6	3.00

LEFT HAND cutters also available

Insert I.C. x Thickness									
.500 x .187	Insert Pg. 39 RDE-43__	Anvil 1351RA/LA-C2	Adjusting Screw 1399	Insert Lock 1570	Lock Screw 1573	Anvil Lock 1571	Lock Screw 10-32 x 1/2"	Locator Seat 1429-3	Lock Screw Wrench 1557-PT8

Machining Parameters

Material	SFPM	FPT	Primary	Secondary
A-286	70-120	.005-.012	RDE-43 GR LTC-22	RDE-43 GR LTC-83
Inconel 718	70-120	.005-.012	RDE-43 GR LTC-22	RDE-43 GR LTC-83
Titanium, 6A1-4V	70-120	.005-.012	RDE-43 GR LTC-22	RDE-43 GR LTC-83

- Free cutting positive geometry is ideally suited for modern day aerospace alloys
- Round inserts with high clearance angles
- The combination of geometry and insert give GTZ machining qualities similar to helical tools
- Precision hardware components ensure quick accurate insert indexing
- Hardened hardware components provide body protection for superior tool durability