

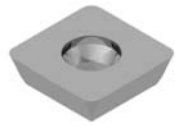
# Inserts

# Conventional

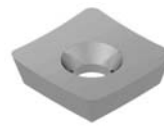
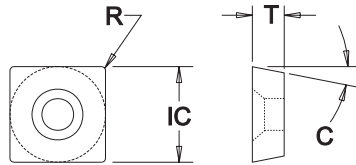
## SECH Type

for "XR" Series cutters

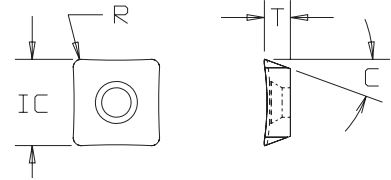
## SECH-10F Type



Flat Face



+10° Dished Face



### Insert Dimensional & Grade Specifications

Insert Number	IC	T	R	C	Coated Grades				Uncoated Grades		
					586XRm	606jRm	LT-50	LT-40	LTC-21	LTC-14	LTC-10
SECH-534	0.625	0.188	0.062	23°	●●●●	●					●●●
SECH-534-10F	0.625	0.188	0.062	23°	●●●	●					●●
SECH-534W520	0.625	0.188	0.062	23°	●●	●					

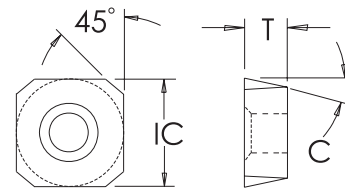
## SEHW Type



Flat Face



for "249" Series cutters



### Insert Dimensional & Grade Specifications

Insert Number	IC	T	Cham	C	Coated Grades				Uncoated Grades	Silicon Nitride
					586XRm	606jRm	LT-2366	LT-5565	LTC-10	LTC-1200
SEHW-43A3M	0.500	0.188	45°	20°	●●●●	●			●●	
SEHW-43A3MA	0.500	0.188	45°	20°			●●			
SEHW-43A3MB	0.500	0.188	45°	20°		●				
SEHW-43A3MW520B	0.500	0.188	45°	20°		●		●		
SEHW-43A3MW820	0.500	0.188	45°	20°						●

● All Materials

● Cast Iron

● Hardened Materials

● Steel

● Aluminum / Non-Ferrous

● Stainless Steel

● Heat Resistant Super Alloys